

# ITG TopGears COMPONENTS



ITG mechanical lift components



The ITG LIMVE Series are centrifugal overspeed governors designed for activating the safety gears of the car frame - cabin or counterweight of elevator systems.

|               |  |
|---------------|--|
| LIMVED200T10M | Φ200 Monodirectional, with test groove, with safety contact, with complete 10 kg tension weight device with contact, WITHOUT cover |
| LIMVED240T10M | Φ240 Monodirectional, with test groove, with safety contact, with complete 10 kg tension weight device with contact, WITHOUT cover |
| LIMVED320T10M | Φ320 Monodirectional, with test groove, with safety contact, with complete 10 kg tension weight device with contact, WITHOUT cover |
| LIMVED350T10M | Φ350 Monodirectional, with test groove, with safety contact, with complete 10 kg tension weight device with contact, WITHOUT cover |
| LIMVED200T20B | Φ200 Bidirectional, with test groove, with safety contact, with complete 20 kg tension weight device with contact, WITHOUT cover   |
| LIMVED240T20B | Φ240 Bidirectional, with test groove, with safety contact, with complete 20 kg tension weight device with contact, WITHOUT cover   |
| LIMVED320T20B | Φ320 Bidirectional, with test groove, with safety contact, with complete 20 kg tension weight device with contact, WITHOUT cover   |
| LIMVED350T20B | Φ350 Bidirectional, with test groove, with safety contact, with complete 20 kg tension weight device with contact, WITHOUT cover   |

Overspeed governors and tension weight devices can be supplied separately by using specific part numbers.  
EN81-20 & 50 certified

| O.G diameters mm | Rated speed m/s | Tripping speed m/s | A3 Norm | Remote test | Remote reset | Test groove |
|------------------|-----------------|--------------------|---------|-------------|--------------|-------------|
| 200              | 0,15 - 1,00     | 0,5 - 1,6          | ●       | ●           | ●            | ●           |
| 240              | 0,15 - 1,60     | 0,5 - 2,00         | ●       | ●           | ●            | ●           |
| 300              | 0,15 - 2,00     | 0,5 - 2,00         | ●       | ●           | ●            | ●           |
| 350              | 0,15 - 2,00     | 0,5 - 2,00         | ●       | ●           | ●            | ●           |

● Yes  
○ No

**Ropes diameter 6/8 mm**  
(Remote test, reset and anticreeping are optionals)

### PART NUMBERS OS ONLY

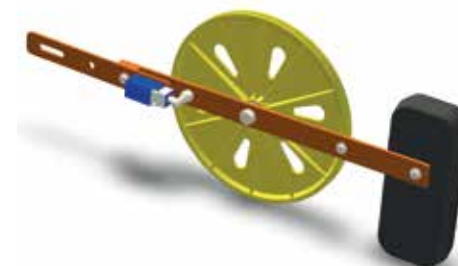
LIMVED200  
LIMVED240  
LIMVED320  
LIMVED350

### OPZIONI - OPTIONS

Anti-creeping device: ATCR0001  
Remote test and remote reset switch:  
RRTS000124V - RRTS000148V  
OS governor cover: LIMVEPROTEZ  
TW pulley cover: LIMVEPULPRO

### PART NUMBERS TW ONLY

T10M  
T20B



The ITG OSG 01 Series are bidirectional overspeed governors designed for activating the safety gears of the car frame - cabin or counterweight of elevator systems.

|                 |  |
|-----------------|--|
| ITGLIMVEL10KGD3 | Φ 300 Bidirectional, with test groove, with safety contact, with complete 10 kg tension weight device with contact |
| ITGLIMVEL15KGD3 | Φ 300 Bidirectional, with test groove, with safety contact, with complete 15 kg tension weight device with contact |
| ITGLIMVEL20KGD3 | Φ 300 Bidirectional, with test groove, with safety contact, with complete 20 kg tension weight device with contact |
| ITGLIMVEL10KGD2 | Φ 200 Bidirectional, with test groove, with safety contact, with complete 10 kg tension weight device with contact |
| ITGLIMVEL15KGD2 | Φ 200 Bidirectional, with test groove, with safety contact, with complete 15 kg tension weight device with contact |
| ITGLIMVEL20KGD2 | Φ 200 Bidirectional, with test groove, with safety contact, with complete 20 kg tension weight device with contact |

Overspeed governors and tension weight devices can be supplied separately by using specific part numbers.  
EN81-20 & 50 certified

| O.G diameters mm | Rated speed m/s | Tripping speed m/s | A3 Norm | Remote test | Remote reset | Test groove |
|------------------|-----------------|--------------------|---------|-------------|--------------|-------------|
| 200              | 0,30 - 1,60     | 0,4 - 1,25         | ●       | ●           | ●            | ●           |
| 300              | 0,50 - 2,00     | 0,5 - 2,00         | ●       | ●           | ●            | ●           |
| 350              | 0,15 - 2,00     | 0,5 - 2,60         | ●       | ●           | ●            | ●           |

● Yes  
○ No

**Ropes diameter 6/8 mm**  
(Remote test and reset are optional)

### OPZIONI - OPTIONS

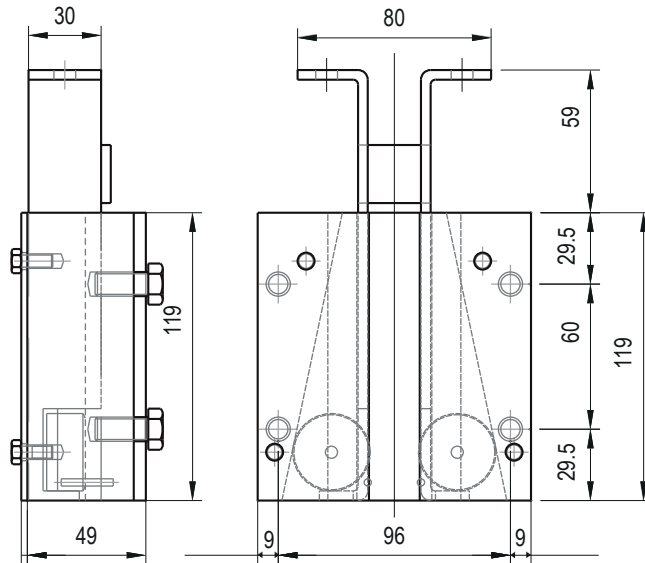
Remote test and remote reset switch



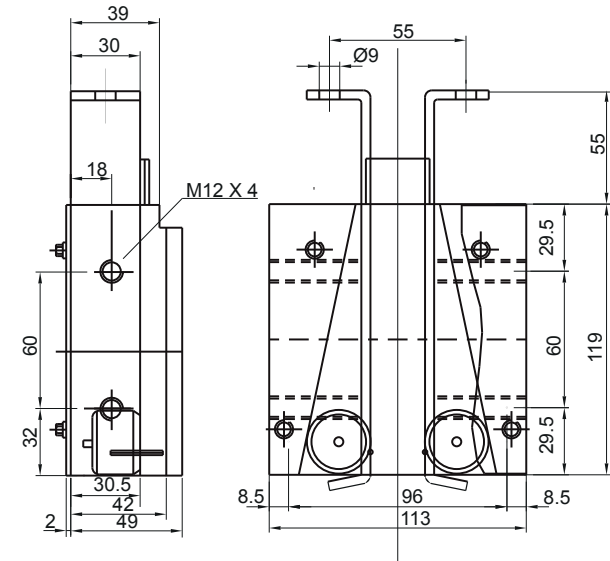
# ITG ITALSAFE



| Guide (mm)  | Velocità nominale (m/s) | Velocità di scatto (m/s) | Diam fori filettati 10 mm ( $\phi$ )     | Massa (kg) | Materiale corpo | Materiale rulli zigrinati          | Carico max. sui due dispositivi a diverse velocità di scatto (kg) |
|-------------|-------------------------|--------------------------|--|------------|-----------------|------------------------------------|---|
| Guides (mm) | Rated speed (m/s)       | Tripping speed (m/s)     | Threaded holes diameter 10 mm ( $\phi$ ) | Mass (kgs) | Body material   | Knurled rollers material           | Max. load on the two devices at different tripping speeds (kgs)   |
| 6 - 16      | 0,8                     | 1,0                      | 10                                       | 4          | C 40            | Bronzo temprato<br>Tempered bronze | 0,60 m/s 3120 kg(s)<br>0,80 m/s 2850 kg(s)                        |



Disegno riferito al Cod. **FRIRULPO** per montaggio inferiore  
Drawing referred to Part number **FRIRULPO** for installation at the bottom



Disegno riferito al Cod. **FRIRULLA** per montaggio laterale  
Drawing referred to Part number **FRIRULLA** for side installation

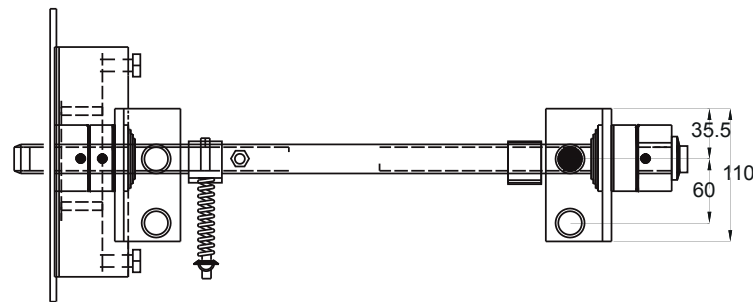
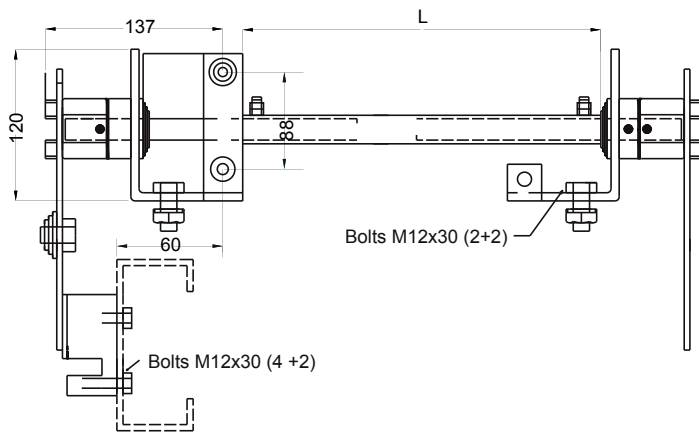
Homologated accordingly to the standard:  
EN 81-20 & 50.

Omologato secondo lo standard:  
EN 81-20 & 50.

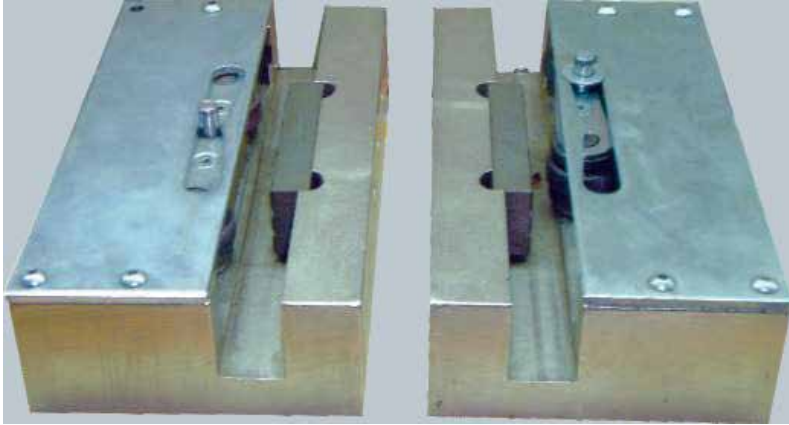
## Aste di reazione per paracadute - Safety gear torque arm



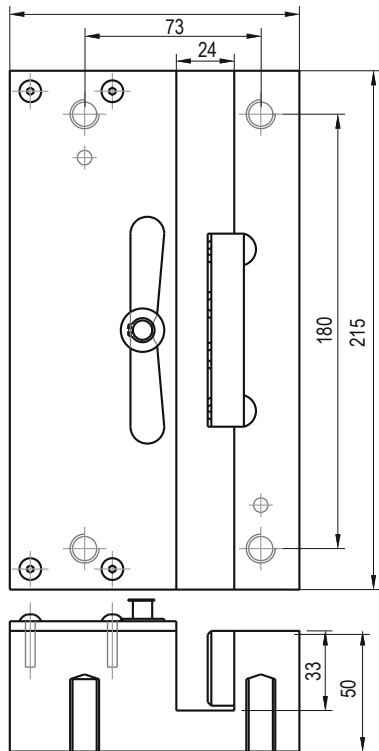
Codice: **BARFREFA** asta di reazione CONBA 1 a lunghezza variabile per codici FRIRUL-PO/FRIRULLA  
Part number: **BARFREFA** variable length CONBA 1 torque arm for part numbers FRIR-ULPO/FRIRULLA



## Paracadute progressivo bidirezionale - Bidirectional progressive safety gear



Codice: SISPARDAPRO Paracadute bidirezionale progressivo ITALSAFE 1  
Part number: SISPARDAPRO Bidirectional progressive safety gear ITALSAFE 1



| Part number   | Type  | Admissible guide rail thickness | Max. rated speed       | Max. speed governor tripping speed    | Fixing holes      | Minimum gripping width  | Operating direction         | Guide rail type                 |
|---|-------|---------------------------------|------------------------|---------------------------------------|-------------------|-------------------------|-----------------------------|---------------------------------|
| SISPARDAPRO   | 00.01 | 8 to 16 mm                      | 2 m/s                  | 2.5 m/s                               | Rear M10          | 25 mm                   | Upward/Downward             | Cold drawn/Oiled                |
| P+Q minimum = 537 Kg (-7,5%)<br>P+Q maximum = 1222 Kg (+7,5%) |       |                                 |                        |                                       |                   |                         |                             |                                 |
| Codice  | Tipo  | Spessore guida ammissibile      | Velocità nominale max. | Velocità di intervento max. imitatore | Fori di fissaggio | Larghezza min. di presa | Direzione di funzionamento  | Tipo guide ammissibili          |
| SISPARDAPRO   | 00.01 | 8 to 16 mm                      | 2 m/s                  | 2.5 m/s                               | Posteriori M10    | 25 mm                   | Verso l'alto/Verso il basso | Trafilate a freddo /Lubrificate |
| P+Q minimo = 537 Kg (-7,5%)<br>P+Q massimo = 1222 Kg (+7,5%)  |       |                                 |                        |                                       |                   |                         |                             |                                 |

| Guide rails width [mm] | X ± 1 [mm] | Larghezza guida [mm] |
|------------------------|------------|----------------------|
| 8                      | 27.5       | 8                    |
| 9                      | 28         | 9                    |
| 10                     | 28.5       | 10                   |
| 12                     | 26.5       | 12                   |
| 14                     | 27.5       | 14                   |
| 15.88 - 16             | 28.5       | 15.88 - 16           |

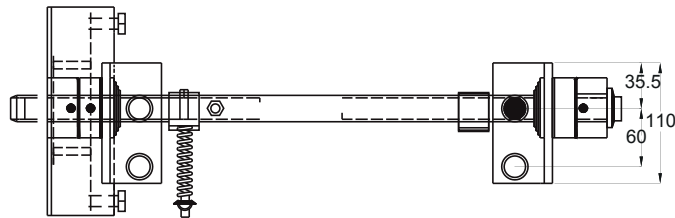
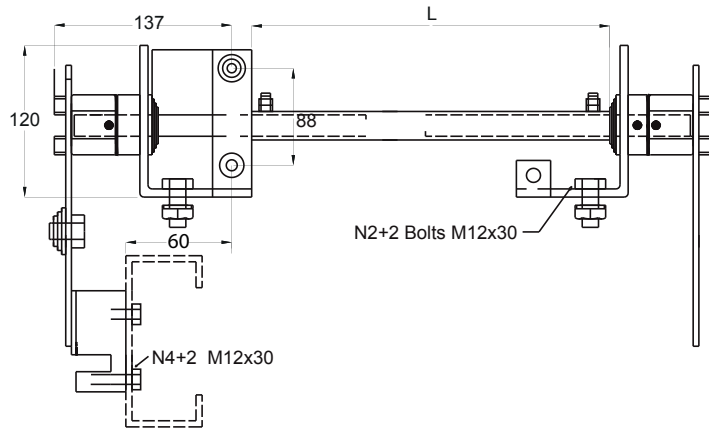
Homologated accordingly to the standard:  
EN 81-20 & 50.

Omologato secondo lo standard:  
EN 81-20 & 50.

**Aste di reazione per paracadute progressivo bidirezionale - Bidirectional progressive safety gear torque arm**



Codice: BARPARDAPRO Asta di reazione CONBA 2 a lunghezza variabile per paracadute codice  
SISPARDAPRO  
Part number: BARPARDAPRO variable length CONBA 2 torque arm for safety gear part number  
SISPARDAPRO



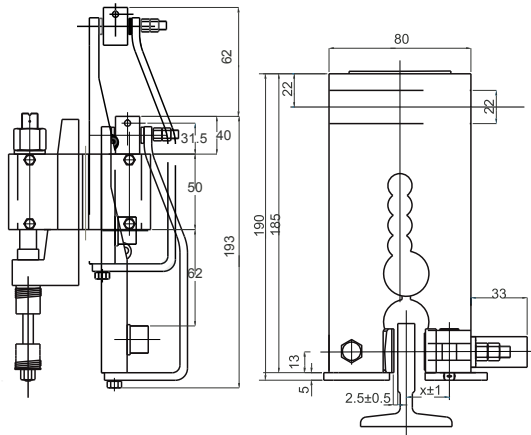
Distance between guides: from 600 to 4000 mm



## Paracadute progressivo bidirezionale - Bidirectional progressive safety gear



Codice: **SISPARSAPRO** Paracadute mono direzionale progressivo ITALSAFE 2  
 Part number: **SISPARSAPRO** Mono directional progressive safety gear ITALSAFE 2



| Part number   | Type  | Admissible guide rail thickness | Max. rated speed       | Max. speed governor tripping speed     | Fixing holes      | Minimum gripping width  | Operating direction        | Guide rail type                 |
|---|-------|---------------------------------|------------------------|--|-------------------|-------------------------|----------------------------|---------------------------------|
| <b>SISPARSAPRO</b>  | 00.02 | 8 to 16 mm                      | 2 m/s                  | 2.5 m/s                                | Rear M10          | 25 mm                   | Downword                   | Cold drawn/Oiled                |
| P+Q minimum = 630 Kg (-7,5%)<br>P+Q maximum = 1780 Kg (+7,5%) |       |                                 |                        |  |                   |                         |                            |                                 |
| Codice  | Tipo  | Spessore guida ammissibile      | Velocità nominale max. | Velocità di intervento max. limitatore | Fori di fissaggio | Larghezza min. di presa | Direzione di funzionamento | Tipo guide ammissibili          |
| <b>SISPARSAPRO</b>  | 00.02 | 8 to 16 mm                      | 2 m/s                  | 2.5 m/s                                | Posteriori M10    | 25 mm                   | Verso il basso             | Trafilate a freddo /Lubrificate |
| P+Q minimo = 630 Kg (-7,5%)<br>P+Q massimo = 1780 Kg (+7,5%)  |       |                                 |                        |  |                   |                         |                            |                                 |

| Guide rails width [mm] | X ± 1 [mm] | Larghezza guida [mm] |
|------------------------|------------|----------------------|
| 8                      | 27.5       | 8                    |
| 9                      | 28         | 9                    |
| 10                     | 28.5       | 10                   |
| 12                     | 26.5       | 12                   |
| 14                     | 27.5       | 14                   |
| 15.88 - 16             | 28.5       | 15.88 - 16           |

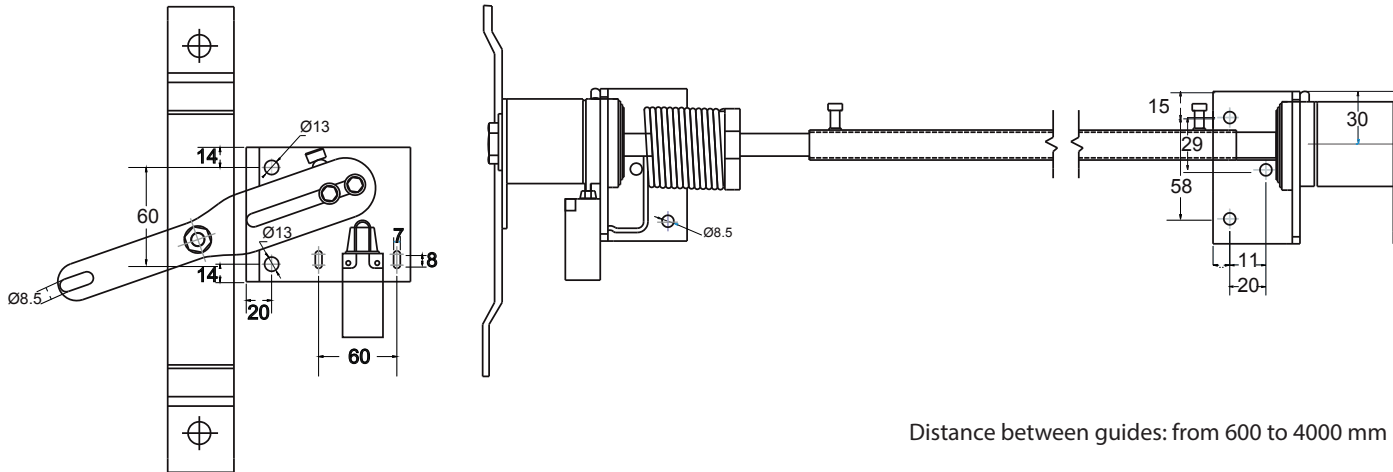
Homologated accordingly to the standard:  
 EN 81-20 & 50

Omologato secondo lo standard:  
 EN 81-20 & 50

# Aste di reazione per paracadute progressivo bidirezionale - Bidirectional progressive safety gear torque arm



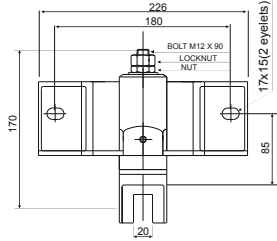
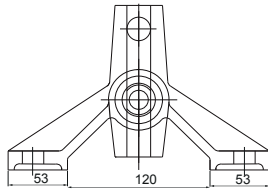
Codice: **BARPARSAPRO** Asta di reazione CONBA 3 a lunghezza variabile per paracadute codice SISPARSAPRO  
Part number: **BARPARSAPRO** variable length CONBA 3 torque arm for safety gear part number SISPARSAPRO



Distance between guides: from 600 to 4000 mm



## Supporti e pattini guide - Guide shoes and sliders



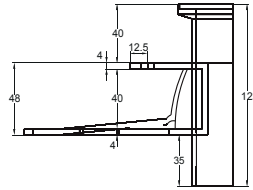
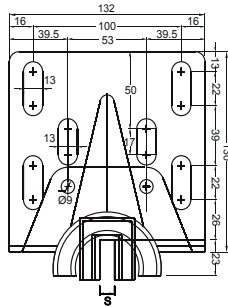
**GUGHL09ST** Supporto pattino orientabile, in ghisa, per guide da 5 a 10 mm - GUGHL09ST Swiveling guide shoe support in cast iron for 5 up to 10 mm guide rails

Carico 1000 N - Load 1000 N

### OPZIONI - OPTIONS

Oliatore codice - Oiler part number

OLIAL05/OLIAL09



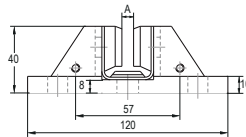
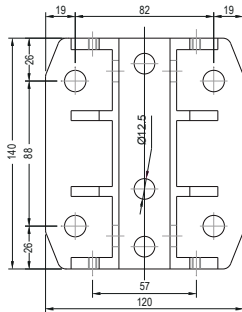
**GUFML09ST** Supporto pattino orientabile, in acciaio, per guide da 5 a 16 mm - GUFML09ST Swiveling guide shoe support in steel for 5 up to 16 mm guide rails

Carico 1000 N - Load 1000 N

### OPZIONI - OPTIONS

Oliatore codice - Oiler part number

OLIAL05/OLIAL09



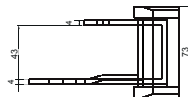
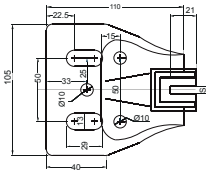
**GUGHL055T** Supporto pattino fisso, in ghisa, per guide da 5 a 16 mm. - GUGHL055T Fixed guide shoe support in cast iron for 5 up to 16 mm guide rails.

Carico 1000 N - Load 1000 N

### OPZIONI - OPTIONS

Oliatore codice - Oiler part number

OLIAL05/OLIAL09



**GUFML055T** Supporto pattino fisso, in acciaio, per guide da 5 a 6 mm. - GUFML055T Fixed guide shoe support in steel for 5 up to 6 mm guide rails.

Carico 1000 N - Load 1000 N

### OPZIONI - OPTIONS

Oliatore codice - Oiler part number

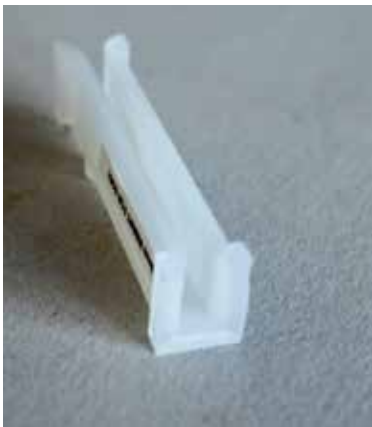
OLIAL05/OLIAL09



Oliatore per pattino guida codice OLIAL05  
Oiler for guide shoe part number OLIAL05



Oliatore per pattino guida codice OLIAL09  
Oiler for guide shoe part number OLIAL09

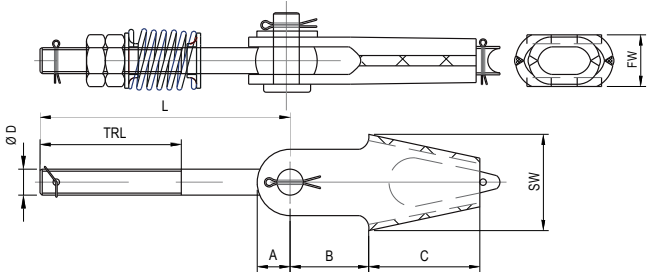


Pattino guida  
Guide sliding shoe  
5 mm CUPLAL05ITG3  
6 mm CUPLAL06ITG3  
7 mm CUPLAL07ITG3  
8 mm CUPLAL08ITG3  
9 mm CUPLAL09ITG3  
10 mm CUPLAL10ITG3  
15,88 mm CUPLAL15ITG3  
16 mm CUPLAL16ITG3

# Attacchi fune - Rope attachments



| Codice gomma   | Codice molla  | Codice solo attacco | Codice con distanziale e molla | Diam. Fune [Ø mm] | D [Ø mm] | L [mm] | TL [mm] | A [mm] | B [mm] | C [mm] | SW [mm] | FW [mm] | Res. Min [KN] |
|----------------|---------------|---------------------|--------------------------------|-------------------|----------|--------|---------|--------|--------|--------|---------|---------|---------------|
| TIFUNIGD10L180 | TIFUNID10L180 | TIFUNIGD10L180D     | TIFUNID10L180D                 | 5 - 6,5           | M 10     | 180    | 75      | 14     | 38     | 48     | 36      | 18      | 22,7          |
| TIFUNIGD12L300 | TIFUNID12L300 | TIFUNIGD12L300D     | TIFUNID12L300D                 | 6 - 8             | M 12     | 300    | 150     | 20     | 55     | 75     | 47      | 22      | 29,4          |
| TIFUNIGD16L300 | TIFUNID16L300 | TIFUNIGD16L300D     | TIFUNID16L300D                 | 9 - 11            | M 16     | 300    | 150     | 25     | 69     | 96     | 60      | 31      | 56,5          |
| TIFUNIGD20L300 | TIFUNID20L300 | TIFUNIGD20L300D     | TIFUNID20L300D                 | 12 - 14           | M 20     | 300    | 150     | 30     | 83     | 117    | 75      | 37      | 78,9          |
| TIFUNIGD24L400 | TIFUNID24L400 | TIFUNIGD24L400D     | TIFUNID24L400D                 | 15 - 16           | M 24     | 400    | 150     | 36     | 94     | 130    | 80      | 45      | 151,5         |



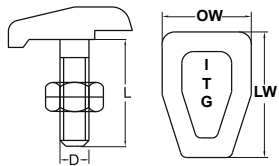
| Part numb. rubber | Part numb. Spring | Part number attachment only | Part numb. with spacer and spring | Rope Diam. [Ø mm] | D [Ø mm] | L [mm] | TL [mm] | A [mm] | B [mm] | C [mm] | SW [mm] | FW [mm] | Min. Strength [KN] |
|-------------------|-------------------|-----------------------------|-----------------------------------|-------------------|----------|--------|---------|--------|--------|--------|---------|---------|--------------------|
| TIFUNIGD10L180    | TIFUNID10L180     | TIFUNIGD10L180D             | TIFUNID10L180D                    | 5 - 6,5           | M 10     | 180    | 75      | 14     | 38     | 48     | 36      | 18      | 22,7               |
| TIFUNIGD12L300    | TIFUNID12L300     | TIFUNIGD12L300D             | TIFUNID12L300D                    | 6 - 8             | M 12     | 300    | 150     | 20     | 55     | 75     | 47      | 22      | 29,4               |
| TIFUNIGD16L300    | TIFUNID16L300     | TIFUNIGD16L300D             | TIFUNID16L300D                    | 9 - 11            | M 16     | 300    | 150     | 25     | 69     | 96     | 60      | 31      | 56,5               |
| TIFUNIGD20L300    | TIFUNID20L300     | TIFUNIGD20L300D             | TIFUNID20L300D                    | 12 - 14           | M 20     | 300    | 150     | 30     | 83     | 117    | 75      | 37      | 78,9               |
| TIFUNIGD24L400    | TIFUNID24L400     | TIFUNIGD24L400D             | TIFUNID24L400D                    | 15 - 16           | M 24     | 400    | 150     | 36     | 94     | 130    | 80      | 45      | 151,5              |



# Clip per guide - Guide rails clips



| CODICE          | D mm | OW mm | LW mm | L mm | PART NUMBER | D mm | OW mm | LW mm | L mm |
|-----------------|------|-------|-------|------|-------------|------|-------|-------|------|
| BRIDA T1GAS1ITG | M 10 | 25    | 32    | 25   | T1GAS1ITG   | M 10 | 25    | 32    | 25   |
| BRIDAT2GAS1ITG  | M 12 | 25    | 39    | 28   | T2GAS1ITG   | M 12 | 25    | 39    | 28   |
| BRIDAT3GAS1ITG  | M 14 | 30    | 45    | 36   | T3GAS1ITG   | M 14 | 30    | 45    | 36   |
| BRIDAT4GAS1ITG  | M 16 | 35    | 50    | 45   | T4GAS1ITG   | M 16 | 35    | 50    | 45   |
| BRIDAT5GAS1ITG  | M 18 | 35    | 55    | 45   | T5GAS1ITG   | M 18 | 35    | 55    | 45   |



## Morsetti fune - Rope clips



Codice/Part number

MORFUND060IT MORFUND080IT MORFUND100IT MORFUND120IT MORFUND160IT

Ø fune mm (D)/Ø rope mm (D)

5-6

7-8

9-10

12-13

15-16

Coppia di serraggio/Tightening torque

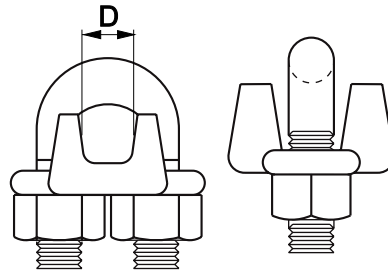
4,24

4,24

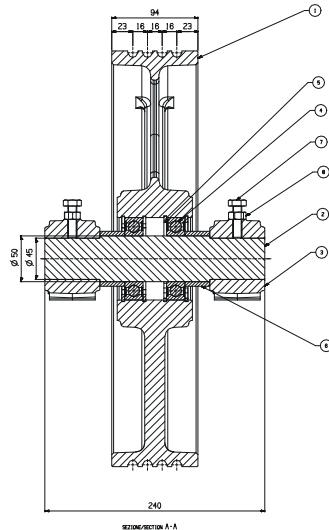
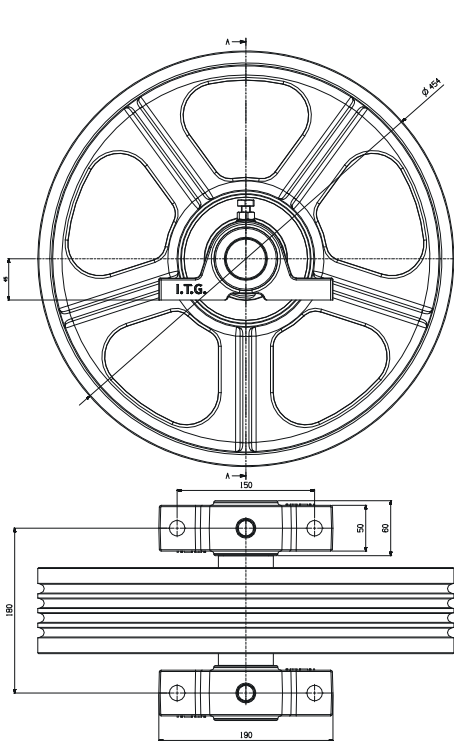
10,20

20,11

20,11



## Pulegge di deviazione standard - Standard divertor pulleys



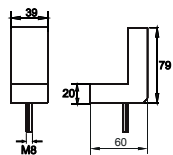
| POSIZIONE | DESCRIZIONE                         | CODICE             | QUANTITÀ |
|-----------|-------------------------------------|--------------------|----------|
| 1         | ALBERO Ø 50 x 240 x 10              |                    | 1        |
| 2         | ALBERO Ø 50                         |                    | 1        |
| 3         | SCHEMMA                             | 6210-50x90x19 2RSI | 1        |
| 4         | CUSCINETTO RULLO 6210-50x90x19 2RSI |                    | 2        |
| 5         | SCHEMMA Ø 100 x 10                  |                    | 2        |
| 6         | SCHEMMA Ø 100 x 10                  |                    | 2        |
| 7         | SCHEMMA Ø 100 x 10                  |                    | 2        |
| 8         | SCHEMMA Ø 100 x 10                  |                    | 2        |

| Codice      | Diametro puleggia<br>[φ mm] | Diametro funi<br>[φ mm] | Diametro albero<br>[φ mm] | Lunghezza albero<br>[mm] | Numero gole    | Cuscinetti          |
|-------------|-----------------------------|-------------------------|---------------------------|--------------------------|----------------|---------------------|
| Part number | Pulley diameter<br>[φ mm]   | Rope diameter<br>[φ mm] | Shaft diameter<br>[φ mm]  | Shaft length<br>[mm]     | Grooves number | Ball bearing        |
| PED40G04SKF | 400                         | 9/11                    | 50                        | 240                      | 4              | 6210 -50x90x19 2RSI |
| PED40G05SKF | 400                         | 9/11                    | 50                        | 240                      | 5              | 6210 -50x90x19 2RSI |
| PED45G04SKF | 450                         | 9/11                    | 50                        | 240                      | 4              | 6210 -50x90x19 2RSI |
| PED45G05SKF | 450                         | 9/11                    | 50                        | 240                      | 5              | 6210 -50x90x19 2RSI |

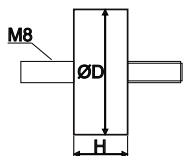
Pulegge di deviazione e di rinvio di diversi diametri e differenti caratteristiche sono disponibili su richiesta  
Divertor and return pulleys with different diameters and diverse characteristics are available upon demand



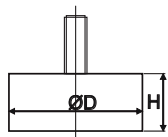
## Tamponi in gomma - Rubber dampers



Codice: **TAAL060X080** tampone antivibrante per cabina - bullone M 8 - durezza Shore A 55  
Part number: **TAAL060X080** anti vibrating rubber damper for cabin- M8 bolt - hardness Shore A 55



Codice: **PACABS12** tampone antivibrante per meccanica - bullone M 8 - durezza Shore A 55  
Part number: **PACABS12** anti vibrating rubber damper for mechanical parts- M8 bolt - hardness Shore A 55



Codice: **BAMGO1V** tampone antivibrante per telaio macchina - bullone M 8 - durezza Shore A 55  
Part number: **BAMGO1V** anti vibrating rubber damper for bedplate - M8 bolt - hardness Shore A 55

## Fotocellule - Photocells



Codice: **FOTOV24R10NW** Kit fotocellula K 1111 senza connessioni precablate, singolo raggio infra-rosso portata 10 m. , completa di manuale di istruzione multilingue compreso arabo  
Part number: **FOTOV24R10NW** Photocell kit K 1111 without pre-wired connectors, 10 mts single infrared ray, complete with multilingual instructions manual including English and Arabic

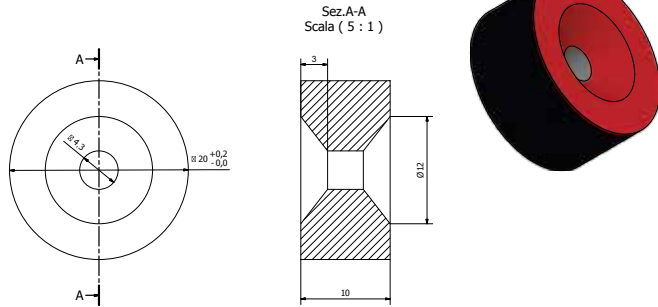
Codice: **FOTOV24R110WW** Kit fotocellula K 1111 con connessioni precablate, singolo raggio infra-rosso portata 10 m. , completa di manuale di istruzione multilingue compreso arabo  
Part number: **FOTOV24R110WW** Photocell kit K 1111 with pre-wired connectors, 10 mts single infrared ray, complete with multilingual instructions manual including English and Arabic

# Magneti - Magnets



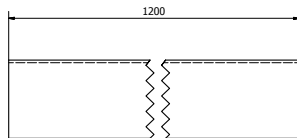
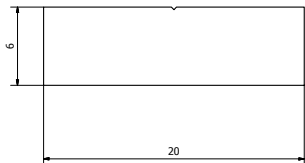
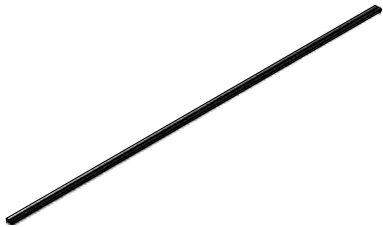
Codice: ANFERD20 anello in ferrite sinterizzata Y30

Part number: ANFERD20 sintered ferrite ring Y35 outer diameter 20 mm (0 / -0,1) mm  
Inner diameter 10 mm (with flared hole 4,5 mm diameter) h 10 mm magnetized through the thickness



Codice: STRAL1200X20X06 banda magnetica flessibile di 1200 x 20 x 6 mm magnetizzata attraverso lo spessore

Part number: STRAL1200X20X06 flexible magnetic band magnetized through the thickness (1200 x 20 x 6 mm)





## Componenti vari - Various components

INFCBTD050 GIOVENZANA limit switch 1NA+1NC adjustable with rubber wheel Ø50  
Finecorsa GIOVENZANA 1NA 1NC regolabile con ruota in gomma Ø50

INMBI8524 Bistable SMP8524A SENS BIST NO  
Bistabile SMP8524A SENS BIST NO

SENPRSM12 Proximity sensor .NO SMP12M-005 GR (120 VA)  
Sensore di prossimità .NO SMP12M-005 GR (120 VA)

RELE3CDIN 3 contacts relay 24/60 complete of DIN rail terminal  
relè a 3 contatti 24/60 completo di morsetto guida DIN

Altre parti componenti sono disponibili su richiesta

Additional component parts are available upon request

## Certificazioni - Certifications

Tutte le componenti ITG Components sono certificate secondo la Direttiva 2014/33/EU, EN81.1/2 e EN81:21014 20 & 50 o agli standard di riferimento specifici.

All the component parts of ITG Components are certified according to the Directive 2014/33 / EU, EN81.1 / 2 and EN81: 21014 20 & 50 Directives or the specific reference standards.

Copyright © is of Italian is Top Gears s.r.l. 2014. All rights reserved. It is expressly forbidden to copy, license, publish or modify any document or image contained in this document or in an annex thereto or connected, without the prior written consent of Italian Top Gears Ltd.

Pursuing continuous improvement of its products, Italian Top Gears has the right to make changes to their features and performance at any time and without notice.

Il Copyright © è di Italian Top Gears s.r.l. 2014. Tutti i diritti sono riservati. Si fa espresso divieto di copiare, licenziare, pubblicare o modificare qualsivoglia documento o immagine contenuta in questo documento, ovvero in un suo allegato o collegato, fatto salvo il consenso scritto da parte di Italian Top Gears s.r.l.  
Perseguendo il costante miglioramento dei propri prodotti, la Italian Top Gears s.r.l. si riserva il diritto di apportare modifiche alle loro caratteristiche e prestazioni in qualsiasi momento e senza l'obbligo di preavviso.

Italian Top Gears s.r.l.

Via Martiri della Romania, 4/C - 42020 - Borzano di Albeina (RE)

Tel.: +39 0522 350155 [info@top-gears.it](mailto:info@top-gears.it) [www.top-gears.it](http://www.top-gears.it)



| Part number   | Type  | Admissible guide rail thickness | Max. rated speed       | Max. speed governor tripping speed     | Fixing holes      | Minimum gripping width  | Operating direction        | Guide rail type                 |
|---|-------|---------------------------------|------------------------|--|-------------------|-------------------------|----------------------------|---------------------------------|
| <b>SISPARSAPRO</b>  | 00.02 | 8 to 16 mm                      | 2 m/s                  | 2.5 m/s                                | Rear M10          | 25 mm                   | Downward                   | Cold drawn/Oiled                |
| P+Q minimum = 630 Kg (-7,5%)<br>P+Q maximum = 1780 Kg (+7,5%) |       |                                 |                        |  |                   |                         |                            |                                 |
| Codice  | Tipo  | Spessore guida ammissibile      | Velocità nominale max. | Velocità di intervento max. limitatore | Fori di fissaggio | Larghezza min. di presa | Direzione di funzionamento | Tipo guide ammissibili          |
| <b>SISPARSAPRO</b>  | 00.02 | 8 to 16 mm                      | 2 m/s                  | 2.5 m/s                                | Posteriori M10    | 25 mm                   | Verso il basso             | Trafilate a freddo /Lubrificate |
| P+Q minimo = 630 Kg (-7,5%)<br>P+Q massimo = 1780 Kg (+7,5%)  |       |                                 |                        |  |                   |                         |                            |                                 |

| Part number   | Type  | Admissible guide rail thickness | Max. rated speed       | Max. speed governor tripping speed     | Fixing holes      | Minimum gripping width  | Operating direction        | Guide rail type                 |
|---|-------|---------------------------------|------------------------|--|-------------------|-------------------------|----------------------------|---------------------------------|
| <b>SISPARSAPRO</b>  | 00.02 | 8 to 16 mm                      | 2 m/s                  | 2.5 m/s                                | Rear M10          | 25 mm                   | Downward                   | Cold drawn/Oiled                |
| P+Q minimum = 630 Kg (-7,5%)<br>P+Q maximum = 1780 Kg (+7,5%) |       |                                 |                        |  |                   |                         |                            |                                 |
| Codice  | Tipo  | Spessore guida ammissibile      | Velocità nominale max. | Velocità di intervento max. limitatore | Fori di fissaggio | Larghezza min. di presa | Direzione di funzionamento | Tipo guide ammissibili          |
| <b>SISPARSAPRO</b>  | 00.02 | 8 to 16 mm                      | 2 m/s                  | 2.5 m/s                                | Posteriori M10    | 25 mm                   | Verso il basso             | Trafilate a freddo /Lubrificate |
| P+Q minimo = 630 Kg (-7,5%)<br>P+Q massimo = 1780 Kg (+7,5%)  |       |                                 |                        |  |                   |                         |                            |                                 |